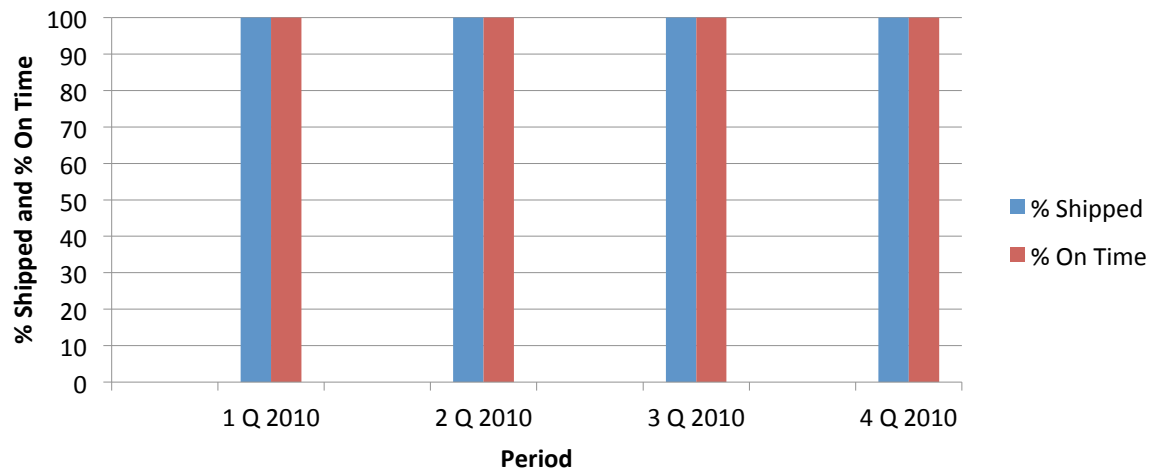


Customer Orders



Summary of Customer Orders

Period	# Orders	# Cables	# Shipped	% Shipped	# On Time	% On Time
1 Q 2010	69	1962	1962	100	1962	100
2 Q 2010	29	1451	1451	100	1451	100
3 Q 2010	7	1226	1226	100	1226	100
4 Q 2010	19	1922	1922	100	1922	100
Summary	124	6561	6561	100	6561	100